

# ST. BONIFACE PARISH

PO Box 190 - 106 E 4<sup>th</sup> St. - Stuart, NE 68780

REV. BERNARD STARMAN, PASTOR  
REV. ROSS BURKHALTER, SENIOR ASSOCIATE PASTOR

M.J. Kersenbrock, Deacon

Roger Filips, Deacon

Office Phone: 402.924.3262 or 402.924.3803

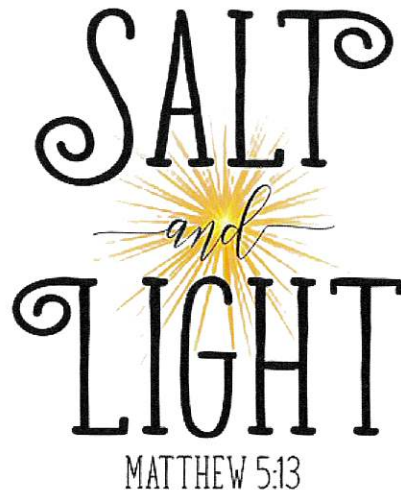
(M, W, TH - 10:00 am-2:00 pm)

After hours: 402.340.0277

Email: [stbonifacestuart@gmail.com](mailto:stbonifacestuart@gmail.com)

Websites: [www.stbonifacestuart.com](http://www.stbonifacestuart.com) or [www.holtboydcatholic.org](http://www.holtboydcatholic.org)

**WEEKEND MASS: Saturday - 5:00 pm**  
**WEEKDAY MASS: Monday & Tuesday - 5:30 pm**



**FEBRUARY 7 - 8, 2026**  
**Fifth Sunday in Ordinary Time**

## Catholic Parishes of Western Holt & Boyd Counties

### SATURDAY

St. Boniface - Stuart - 5:00 pm

St. Patrick - O'Neill - 5:00 pm

### SHBC - SATURDAY - 7:00 pm

Week 1: St. Mary - Spencer

Week 2: St. Mary - Spencer

Week 3: St. Mary - Spencer

Week 4: Ss. Peter & Paul - Butte

Week 5: St. Mary - Spencer

### Mass Schedules:



### SUNDAY

St. Joseph - Atkinson - 9:00 am

St. Patrick - O'Neill - 10:30 am

St. Joseph - Amelia - 11:15 am

### SHBC - SUNDAY - 8:00 am

Week 1: Ss. Peter & Paul - Butte


Week 2: Ss. Peter & Paul - Butte

Week 3: Ss. Peter & Paul - Butte

Week 4: St. Mary - Spencer

Week 5: Ss. Peter & Paul - Butte

## MINISTRY SCHEDULE

	FEB 14 5:00 PM	FEB 21 5:00 PM
LECTOR:	Darby Paxton	Kevin Murphy
EMHC:	Terry Murphy	Sarah Addison
SERVERS:	Karlee Wolf Jase Wolf Emily Karo	Truman Addison Kennedie Kohle Annabel Kohle
GREETERS/ GIFTS:	Robert & Patty Hanzlik	Brock & Kristen Lange Family
USHERS:	Leon Kramer Jeff Wallinger Tom Krysl Gary Stoltenberg	Leon Kramer Jeff Wallinger Tom Krysl Gary Stoltenberg
MONEY COUNTERS:	Jeff & Kim Wallinger	Jeff & Kim Wallinger

Our time, talents, and treasure are on loan from God. Give them away with unlimited generosity.

## MASS TIMES AND INTENTIONS

Monday - February 9 - 5:30 p.m.  
✠ IRENE COBB

Tuesday - February 10 - 5:30 p.m.  
✠ JUEL VERA BAUM SMITH

Wednesday - February 11 - NO MASS

Thursday - February 12 - NO MASS

Friday - February 13 - NO MASS

Saturday - February 14 - 5:00 p.m.  
✠ ALL SOULS

Sunday - February 15 - 9:00 a.m. - Atkinson

## EVENTS AND MEETINGS

Monday - February 9  
4<sup>th</sup> Degree KC Meeting  
7:30 p.m.

Wednesday - February 11  
NO Youth Choir  
NO CCD Classes

Saturday - February 14  
Rectory Contents Open House  
1:00 p.m. - 4:00 p.m.

Wednesday - February 18  
ASH WEDNESDAY  
Youth Choir Sings  
Mass @ 5:00 p.m.

Wednesday - February 18  
NO Youth Choir  
NO CCD Classes

Friday - February 20  
Stations of the Cross @ 4:30 p.m.  
KC Fish Fry - Stuart @ 5:00 p.m.

Saturday/Sunday - February 21/22  
Special Collection  
Black & Indian Missions

## STEWARDSHIP:

February 1, 2026

Regular Envelopes	\$655.00
Loose	\$156.00
Children's Collection	\$27.00
Electronic Donations:	
February 1st	\$1680.00
February 15th	
Special Collections:	
-----	
TOTAL	\$2518.00

Confession Times: Saturdays 4:30-4:50 p.m. or by appointment

"The  
light  
shines  
in  
the  
darkness  
and  
the  
darkness  
has  
not  
overcome

it."

John  
1:5



## NOTEWORTHY

**OACCW WINTER MEETING - FEBRUARY 10, 2026** - All women are invited to attend the OACCW (Archdiocese Council of Catholic Women) meeting on Tuesday, February 10, 2026 at the KC Hall in Atkinson. ITINERARY: 9:30 a.m. Registration of \$10 includes coffee/rolls and lunch. 10:00 a.m. meeting hosted by RNW Deanery ladies. 11:30 Mass, Lunch, Afternoon-Commission Reports. RSVP encouraged by February 1st for lunch count to Leonarda Arens OACCW President via email at [arensljrepair@hotmail.com](mailto:arensljrepair@hotmail.com) or text to 402-253-5120.

### **ASH WEDNESDAY - FEBRUARY 18, 2026 - SCHEDULE OF MASSES AND SERVICES**

8:10 a.m. - Mass - St. Patrick - O'Neill  
 8:15 a.m. - Mass - St. Joseph - Atkinson  
 12:15 p.m. - Blessing & Distribution of Ashes - St. Patrick - O'Neill  
 5:00 p.m. - Mass - St. Boniface - Stuart  
 6:30 p.m. - Mass - Ss. Peter & Paul - Butte  
 7:00 p.m. - Mass - St. Joseph - Amelia  
 7:00 p.m. - Blessing & Distribution of Ashes - St. Patrick - O'Neill



### **KNIGHTS OF COLUMBUS FISH FRY FRIDAYS**

Stuart - St. Boniface Church Basement - 5 - 7:30 p.m. - February 20, March 6, March 20  
 Atkinson - KC Hall - 5 - 8:00 p.m. - February 27, March 13, March 27

**STATIONS OF THE CROSS - FEBRUARY 20, 2026** - Stations of the Cross will be held every Friday at 4:30 p.m.

**UPCOMING SPECIAL COLLECTION - FEBRUARY 21-22, 2026** - A special collection will be taken up for Black and Indian Missions on the weekend of February 21<sup>st</sup> & 22<sup>nd</sup>.

**MINI REFLECTION:** The greatest saints in history were not great at holiness. The greatest saints in history were great at being who they were meant to be.

Please keep in your prayers our Seminarian of the Month: Michael Figura

#### **RECTORY CONTENTS FOR SALE OPEN HOUSE**

Saturday, February 14  
 1:00 p.m. - 4:00 p.m.  
 or by appointment.  
 Call Jan Kunz to set up a time  
 to come look at items for sale.  
 402.340.2303

#### **ASH WEDNESDAY - FEB. 18 MINISTRY SCHEDULE**

5:00 p.m.  
 Lector: Kim Estes  
 EMHC: Darby Paxton  
 Servers: Confirmation  
 Students  
 Greeters/Gifts: Confirmation  
 Students

#### **CCD INFORMATION:**

February 11th  
 NO Youth Choir  
 NO CCD Classes  
  
February 18th  
 NO Youth Choir  
 NO CCD Classes

#### **CHRISTIAN MOTHERS**

Next Mtg: March 9  
 @ 6:00 p.m.  
 Church Basement  
  
 Next Funeral/Function:  
 CH 1

#### **KNIGHTS OF COLUMBUS**

KC Mtg:  
 March 2 @ 7:30 p.m.  
 ++++++  
 4<sup>th</sup> Degree Mtg:  
 February 9 @ 7:30 p.m.  
 Location: Stuart

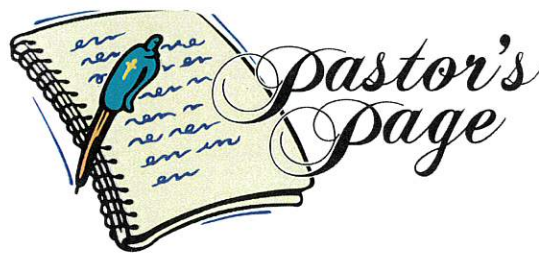
#### **LADIES GUILD GATHERING**

February 26  
 2:00 p.m.  
  
 St. Boniface  
 School Building

#### **PLEASE PRAY FOR:**

Beckett Block  
 Luke Olberding  
 Kirstine Chvala  
 Lois Schaaf  
 Norbert & Jeanette  
 Starman





Dear Parishioners and Friends of the Catholic Parishes of Western Holt and Boyd Counties,

Today if we say someone is “the salt of the earth,” we understand that person to be solid and dependable, someone who can be counted on through thick and thin. We might also say that someone’s speech is salty to mean that their language is coarse, like that of a sailor who has been out to sea for a long time and who has not had to be concerned about using polite expressions in refined company. But when Jesus said to his disciples that they were to salt of the earth, they might have understood the metaphor in light of several biblical connotations.

First, salt was critical necessity for human life, along with water, fire and iron, as Sirach 39:26 states. Salt was important for seasoning and preserving food. Job questions, “Can anything insipid be eaten without salt?” (Job 6:6). Another way salt was important was for liturgical functions. It was included with cereal offerings (Lev 2:13) and burnt offerings (Ezek 43:24). Blending with salt with incense kept the fragrant powder pure and sacred (Exod 30:35). Salt was what Elisha used to purify a polluted spring of water (2Kings 2:19-22). In Catholic liturgical tradition, the baptismal ritual included putting salt on the infants tongue, as a symbol of incorruptibility. Another way in which salt was used was to ratify covenants (Num 18:19; 2 Chr 13:5). As a preservative, salt symbolized the lasting nature of the agreement.

Jesus then queries, “But if salt loses its taste, with what can it be seasoned?” (Matt 5:13). It seems like a trick question. Salt can be diluted, but could it ever lose its taste entirely? It is possible that Jesus was quoting an ancient proverb to which his disciples would respond, “Impossible!” In the Talmud there is an ancient account of Rabbi Joshua ben Hananya (ca. 80-120 CE) who was asked by philosophers in the Athenaeum at Rome, “If salt becomes savorless, with what can it be salted?” He responded, “With the after-birth of a mule” (b. Bek 8b). The point is that just as it is impossible for a mule to give birth, or for salt to become insipid, so disciples cannot cease to be who they are and season the world with the good news.

The accompanying image of disciples as light reinforces the message. As impossible as it is for a city set on a mountain to be hidden, and as unthinkable as wasting fuel by lighting a lamp to extinguish it immediately, so inconceivable is it that disciples would cease to let their light shine before others. Although trials and tribulations may threaten to dilute disciples’ “saltiness” or dim their light, nothing is ever going to be able to take away their capacity to illumine God’s love for others.

Finally, salt and light are most effective when they do not call attention to themselves. Just as in well-seasoned food the salt is not noticeable and in properly lit room the lamps are not the focus of attention, so disciples’ good deeds do not redound to themselves but lead others to glorify God.

Ad multos annos!

Fr. Bernard Starman  
Pastor

# St. Boniface Rectory Items for Sale:

**OPEN HOUSE - SATURDAY, FEBRUARY 14**  
**1:00-4:00 P.M.**

or call Jan Kunz at 402.340.2303  
to set up a time to see items.

Prices on items in the Rectory.

**ALL ITEMS ARE CASH & CARRY**

Items will go public on February 23rd.

Many other smaller items also available.

Full Bed w/ Matching Dresser



Smokers Table



Drop-Leaf Dining Room  
Table w/ 8 Chairs and 2 Leaves



Full Bedroom Set w/ Matching Mirrored  
Vanity and 4-drawer Dresser & Side Table





Miscellaneous Kitchen Items &  
Kitchen Table w/ 4 Chairs & 1 Leaf



Metal Storage Cabinet



Dehumidifier



Mirrored Coat Hanger



Vault



Washer & Dryer



Freezer



Dishwasher





Queen Bed w/ Matching Mirror Dresser &  
4-drawer Dresser & Side Table



Matching Chairs; Mirrored Table;  
3-shelf Bookshelf



## Under-the-cabinet Sewing Machine with Chair



### Miscellaneous Kitchen Items



Stove



Refrigerator



Microwave





Couch



Recliner



Loveseat



Rocking Chair



Glider Chair



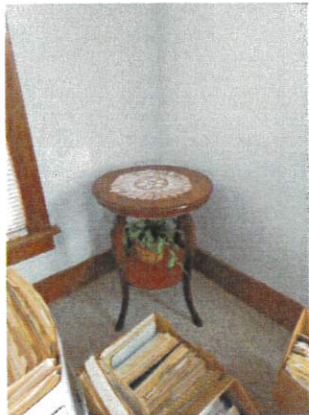
End Table w/ Glass Top



2 Ottomans



Accent Table



Lamp



Chairs



Wall Clock



Matching Twin Beds



Rolling Desk Chair



File Drawer & Matching Desk w/ Chair





**LENT IS COMING!**

# CONSIDER DOING A BIBLE STUDY

FREE Live Lent Together Packets Available at the Parish Office. Themes include: Generosity, Mission, Mercy, The Sunday Gospels, Encounter, Mystery, and Nourish.

NEW THIS YEAR:  
AN INDIVIDUAL OR SMALL  
GROUP STUDY ON  
6 LESSER-KNOWN  
PARABLES  
AVAILABLE IN THE BACK OF  
CHURCH ON THE WEEKEND  
OF FEBRUARY 14-15



The season of Lent is a great time to do a little extra something - maybe it's time to start a small group! The benefits of a small group include: building relationships, growth in faith, encouragement, support, sharing the word of God, and so much more!

Other book studies are also available to view in the Director of Evangelization & Catechesis Office in the O'Neill office or if you'd like more information or have questions, please call Jan Kunz at 402.340.2303 or email [jmkunz@archomaha.org](mailto:jmkunz@archomaha.org)



# Lent is for Loving

Color each box as you journey through Lent

Sunday	Monday	Tuesday	Wednesday	Thursday	Friday	Saturday
40 Days of Lent +			Ash Wednesday Make a prayer & fast plan	Compliment someone who isn't expecting it	Make an "almsgiving" box and collect change throughout Lent to donate to charity	Enjoy nature as a family. What beauty do you notice?
1 <sup>st</sup> Sunday of Lent Sing a song to God	Pray for good things for someone that has been unkind to you	Do something healthy to take care of the body that God gave you	Fast from sweets and candy today	Surprise someone by doing a chore or task that they normally do	Write a thank you note to someone that has been a good influence in your life	Thank God for your gifts and talents
2 <sup>nd</sup> Sunday of Lent Read a religious book as a family	Memorize a prayer that you don't know by heart	When you hear a siren pray for rescue workers and the people, they take care of	Make a list of what you are grateful for	Pray for world and religious leaders	Put a bag of things together that are still nice but you don't use anymore to donate	Make pretzels, a traditional Lenten food
3 <sup>rd</sup> Sunday of Lent Plan a family meal and talk about what you love about each other	Pray for the sick and lonely	Say something kind to a friend or your sibling	Use manners like "please" and "thank you" as many times as you can	Send a card or note to someone to show them extra love	Learn more about a saint that you are unfamiliar with	Pray a decade of the rosary as a family
4 <sup>th</sup> Sunday of Lent Donate a bag of food to church or charity	Invite the holy spirit into your life to help you make decisions (Read: John 14:26)	Pray for frontline workers	Chat with someone you don't normally talk to	Listen to religious music while doing a task	Do a craft or piece of art to prepare for Easter	Put a bag of things together that are still nice but you don't use anymore to donate
5 <sup>th</sup> Sunday of Lent Read a story from the bible as a family	Offer to help a family member do something	Pray for the Pope & those in religious life	Do a random act of kindness for someone that doesn't expect it	Focus on doing your neatest work during learning	Attend or read stations of the cross	Clean up a mess that someone else made without being asked
6 <sup>th</sup> Sunday of Lent Watch a religious movie as a family	Cooperate without complaining	Begin your day with quiet time and prayer	Lead grace at dinner	Holy Thursday Do something to help the earth	Good Friday Give up TV or the internet	Holy Saturday Help someone without being asked

Easter Sunday! Jesus Christ is Risen, Alleluia!

